

## ESM 정의

□ ESM(Enterprise Security Management) ?

가

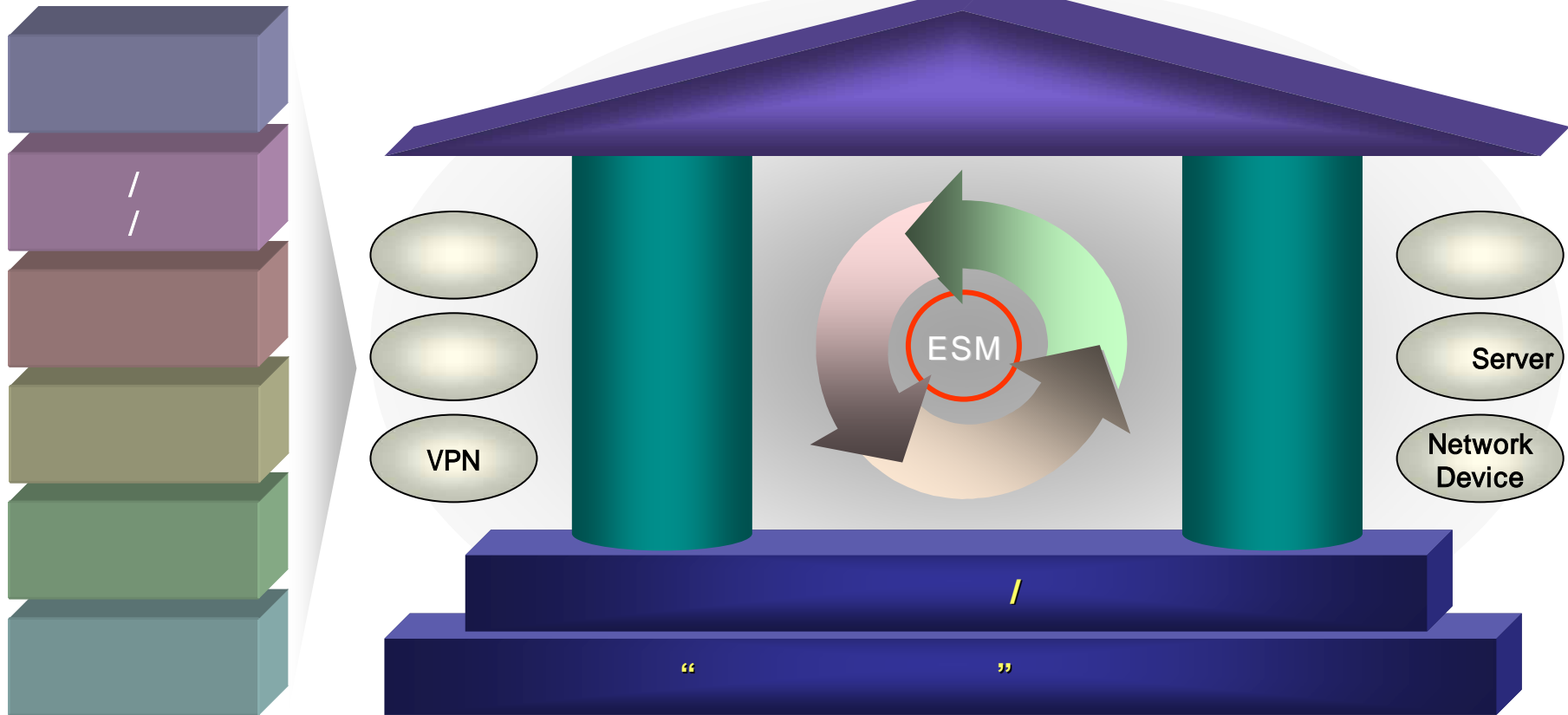
/

,

“

”

.



## ESM 목적

□

✓

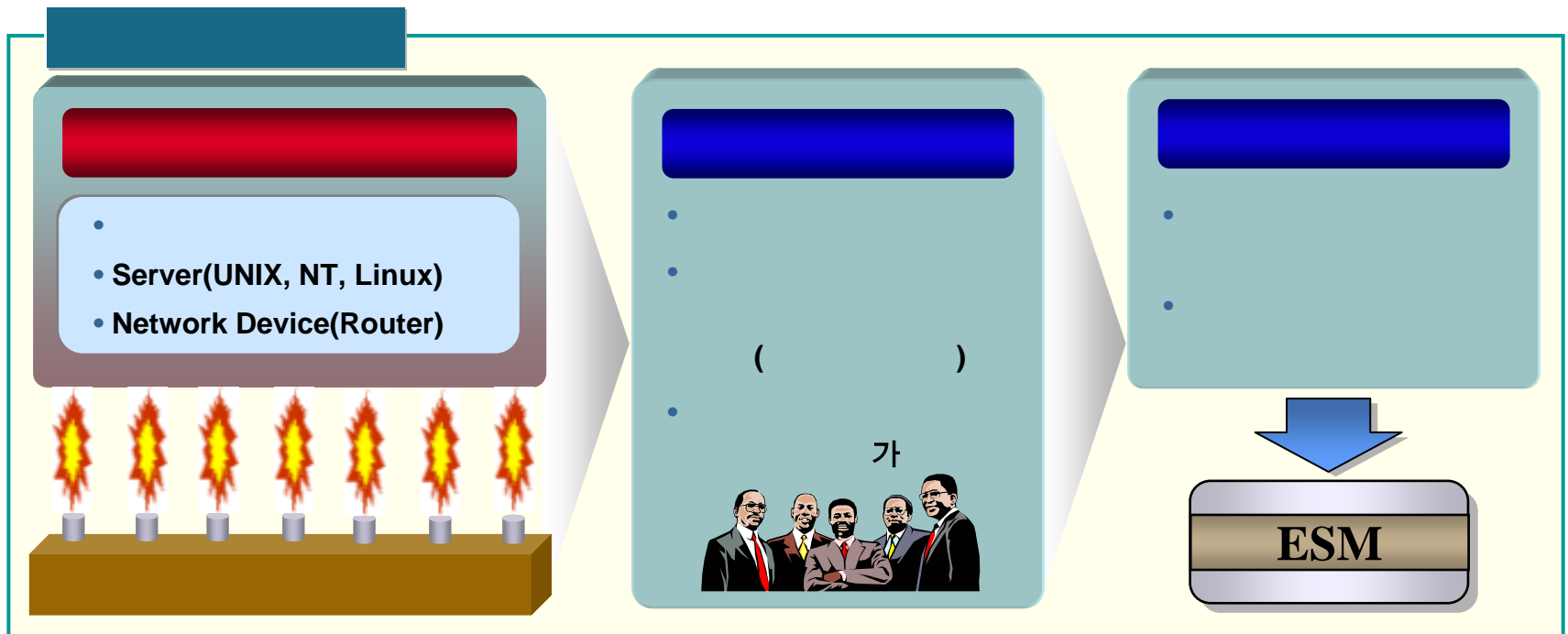
✓

✓

✓

, 가

, ,

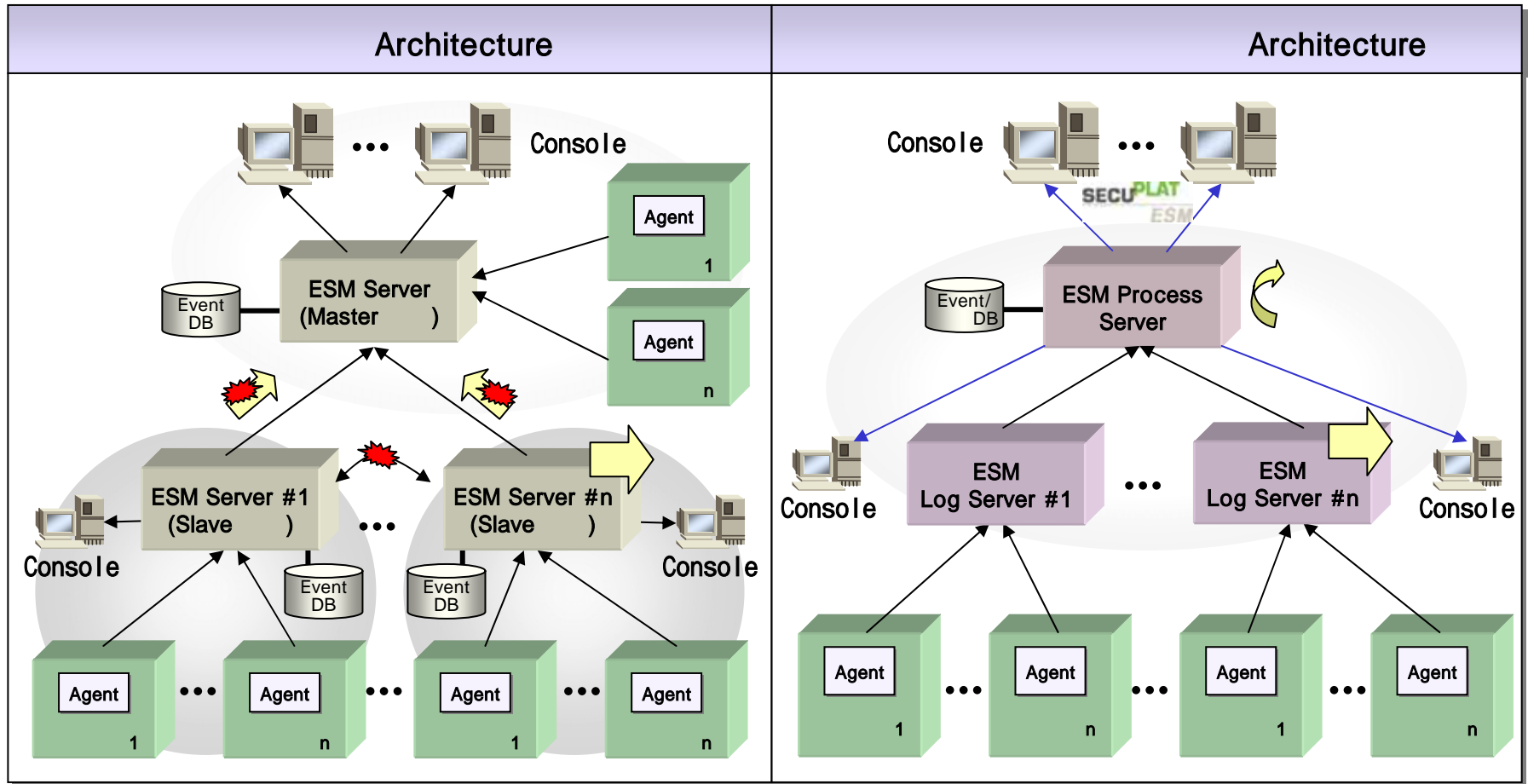


ESM 구축 유형(계속)

SecuPlat ESM

Architecture

가

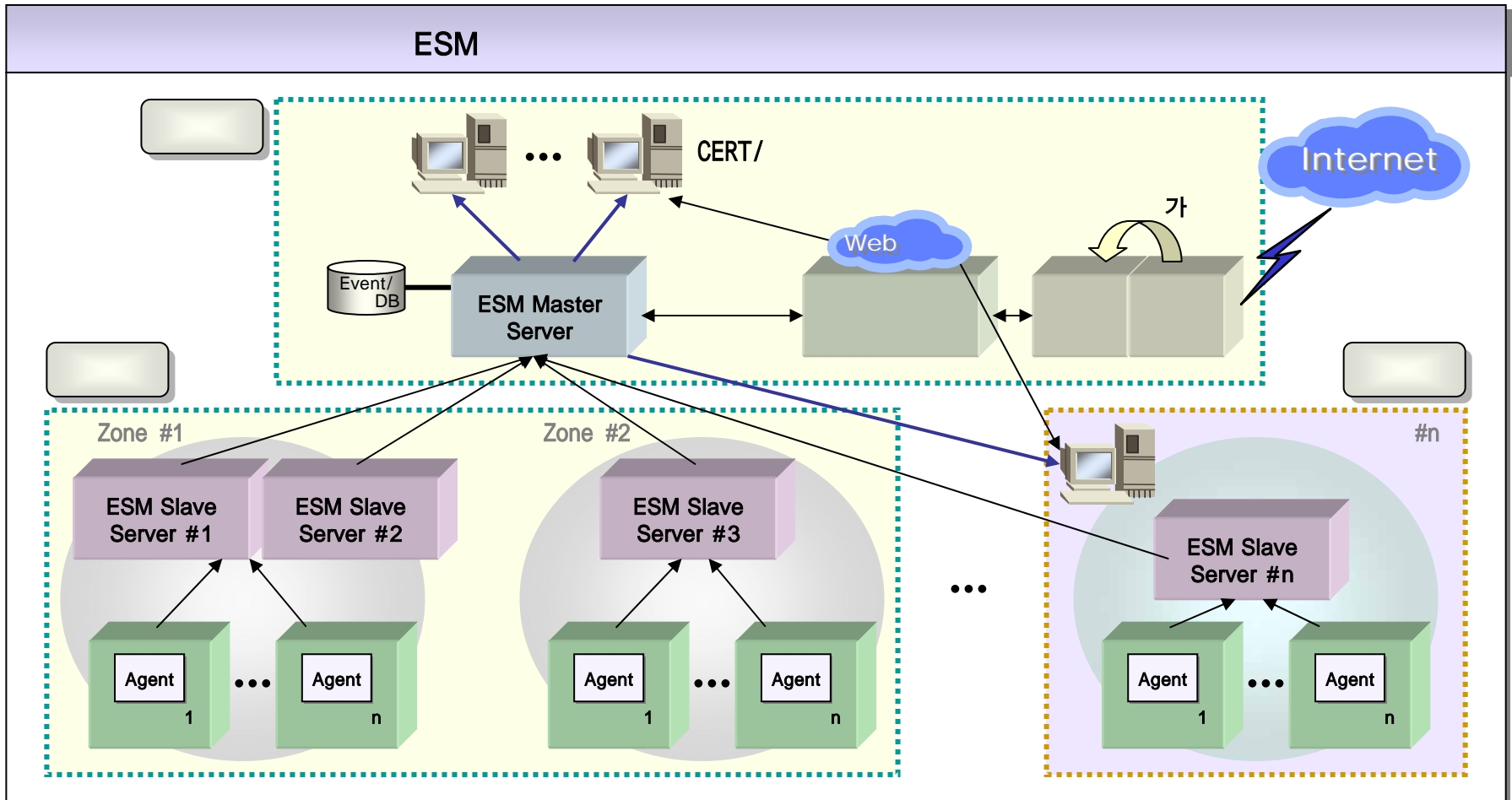


< >

가 ,

ESM 구축 유형(최근 경향)

.(ISAC )



## ESM 시스템 구성

□ 가 2 ESM



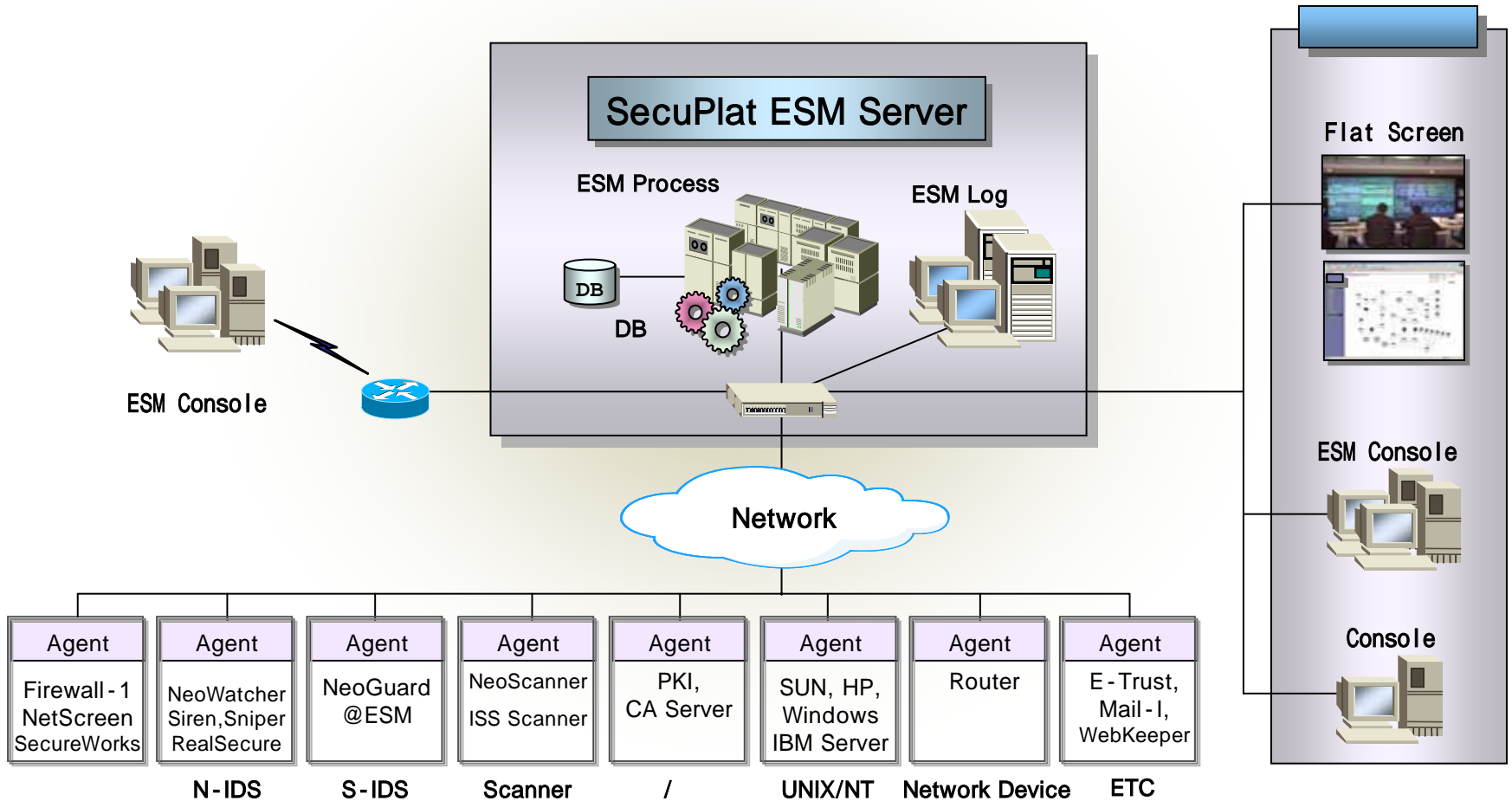
✓

“

”가

가

,



## ESM 시스템 기능 설명

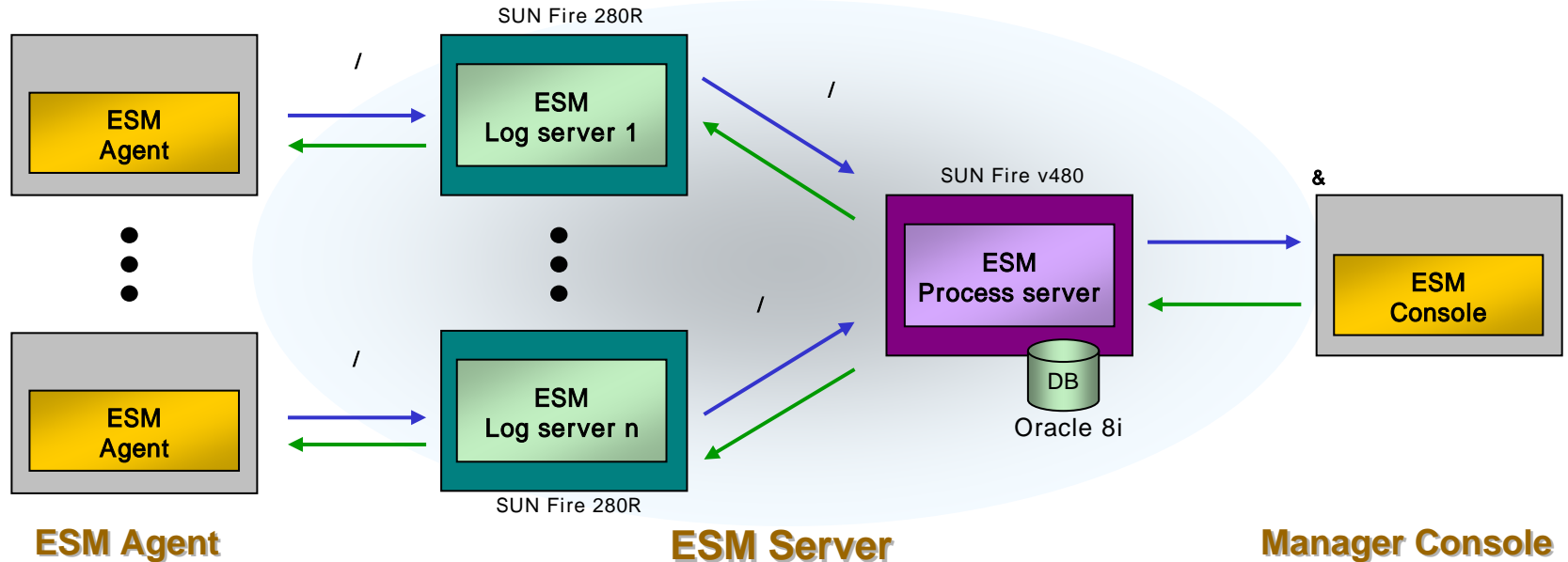
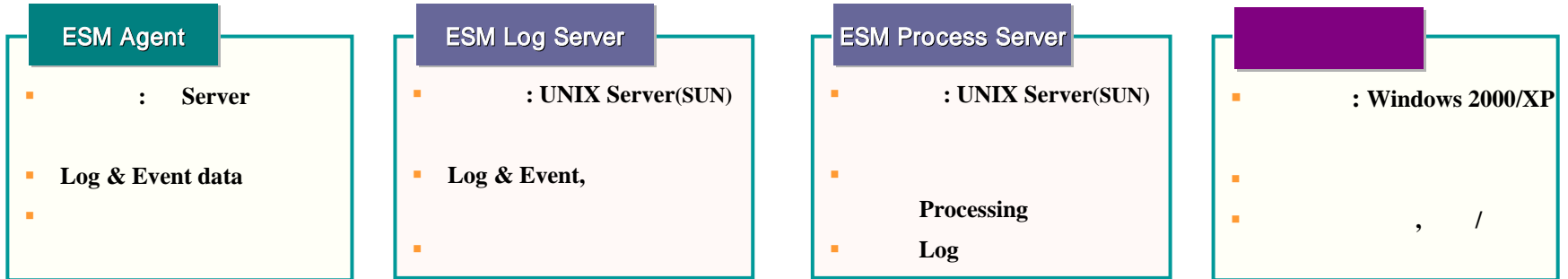
□

✓

Process Server    Log Server

Log Server

가 가



# SecuPlat ESM 도입 기대효과

## 통합보안 관리체계 확립

**Satisfaction** : ,

- 가
- ( 50%)

**Speed** : /

- 가
- ( 20~25%)

**Quality** :

- 가
- , ,

**Cost** :

- 가
- 가
- 가 ( 20% )

# ESM 주요 기능 설명

## SecuPlat ESM

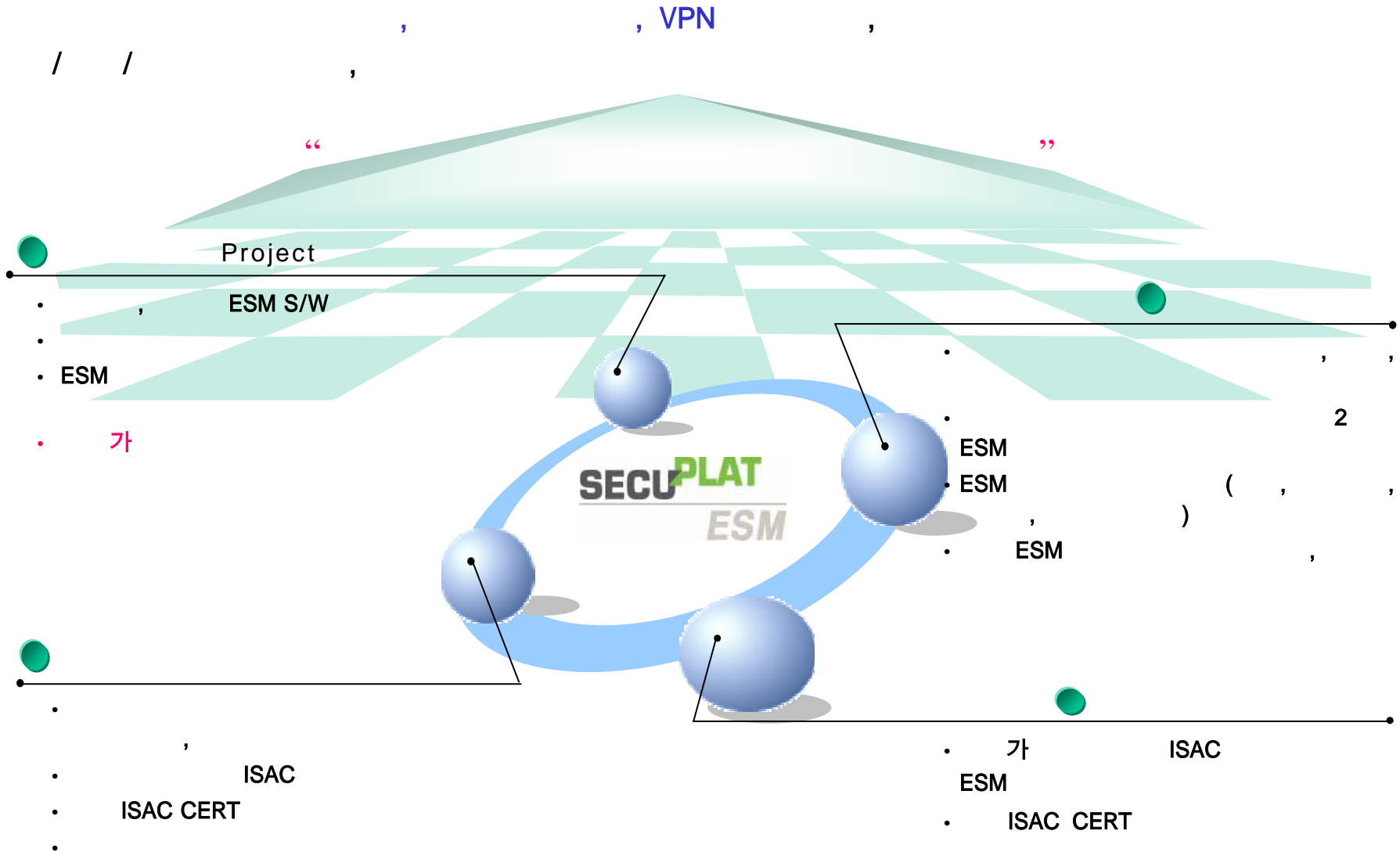
		<ul style="list-style-type: none"> <li>✓ 6</li> <li>✓ , ,</li> <li>✓ ( IP )</li> <li>✓ /</li> <li>- IDS Rule</li> </ul>		-
		<ul style="list-style-type: none"> <li>✓</li> <li>✓</li> </ul>		-
		<ul style="list-style-type: none"> <li>✓ ( )</li> <li>✓ ESM ,</li> <li>✓ ( 가 )</li> <li>- /</li> <li>- /</li> </ul>		-
		<ul style="list-style-type: none"> <li>✓ 72</li> <li>- , , , Top N</li> <li>-</li> </ul>		-

· OPSEC, SNMP, Syslog, TCP/IP, SSL

가  
- NeoWatcher & NeoGuard Policy Control

가  
- 4 가

# 제품 특징 ( 한국증권전산 • 인젠 컨소시엄 )



# 한국증권전산 • 인젠 컨소시엄 특징점

□

✓ 가  
 가 ( )

✓  
 .

✓ (ESM)  
 , 가  
 .